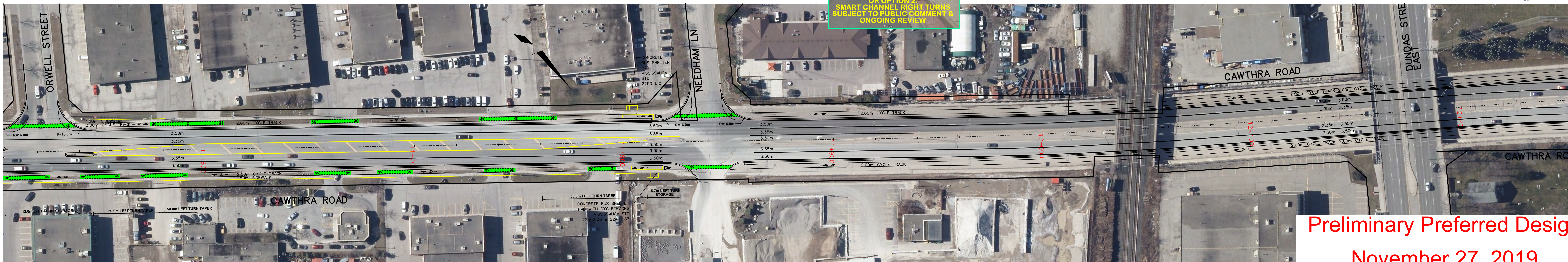
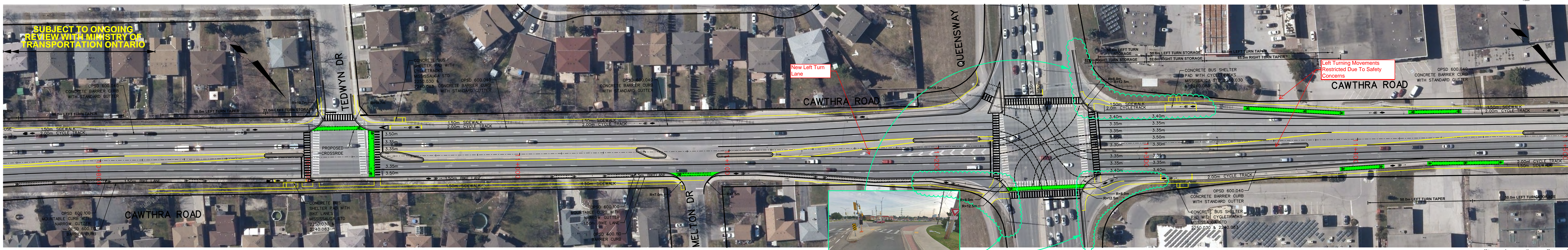


Cawthra Road Class EA Study

SUBJECT TO ONGOING REVIEW WITH MINISTRY OF TRANSPORTATION ONTARIO



Preliminary Preferred Design
November 27, 2019

Cawthra Road Class EA Study



Preliminary Preferred Design

November 27, 2019

Cawthra Road Class EA Study



EXAMPLE: CROSS RIDE @ DOVENCOURT AVE. AND CHURCHILL AVE. (OTTAWA)

CROSSRIDES ARE PROVIDED TO ALLOW CYCLISTS TO RIDE THEIR BICYCLE WITHIN THE CROSSING WITHOUT DISMOUNTING



EXAMPLE: CYCLETRACK @ CHURCHILL AVE. (OTTAWA)

PRELIMINARY PREFERRED CYCLING INFRASTRUCTURE FOR THE CORRIDOR WITH SEPARATION



EXAMPLE: RAISED BIKE LANE @ CULLY BLVD (WATERLOO)

CYCLING INFRASTRUCTURE FOR AREAS OF THE CORRIDOR THAT ARE CONSTRAINED WITH FREQUENT DRIVEWAY ENTRANCES TO REDUCE BUMPY CYCLING EXPERIENCE

Preliminary Preferred Design

November 27, 2019