

WELCOME

PUBLIC OPEN HOUSE

Mississauga Road, Olde Base Line Road, Winston Churchill Boulevard, Bush Street, and Old Main Street

Tuesday, October 30, 2012

Belfountain Public School



Meeting Purpose

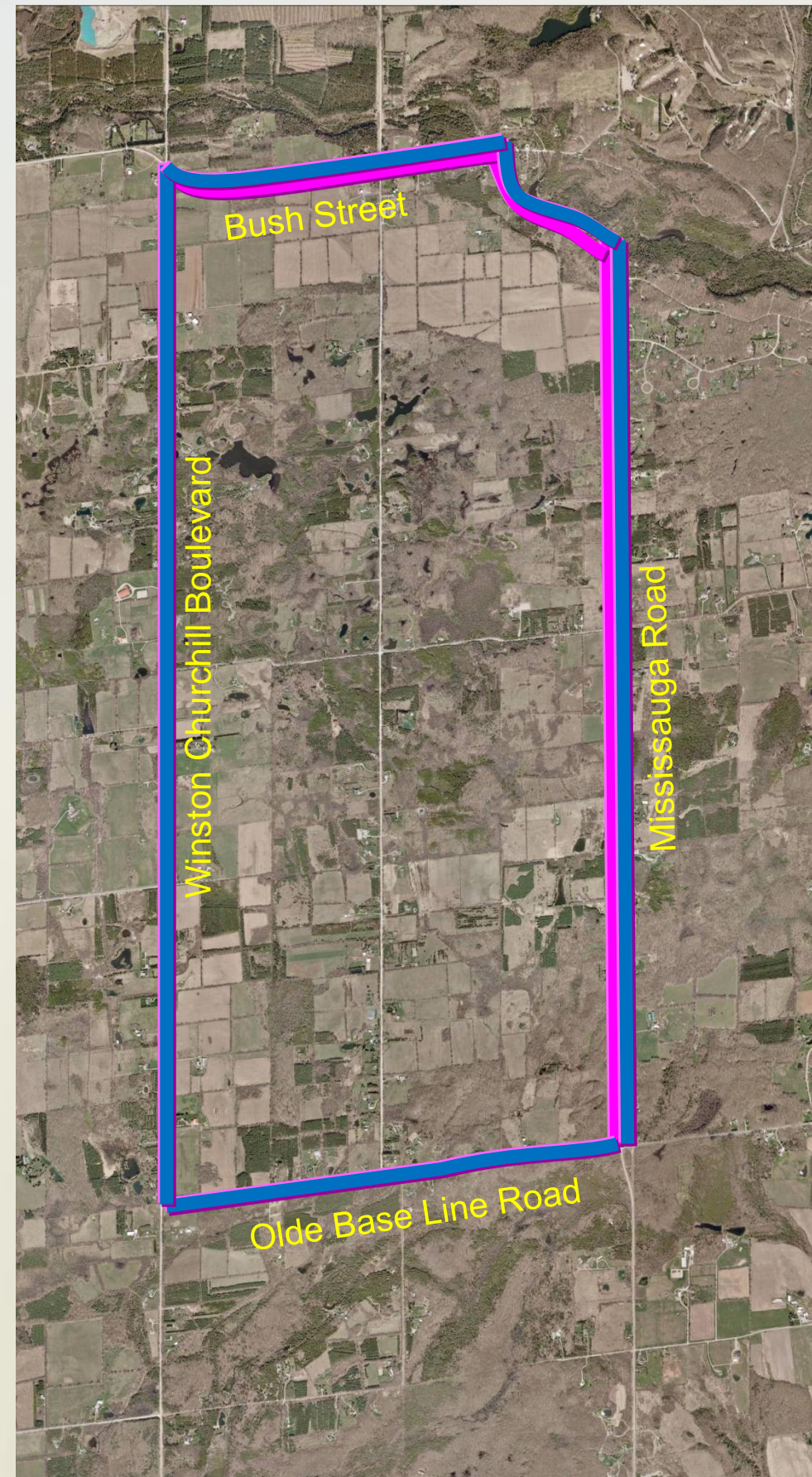
We are holding this open house to have a conversation with the residents about:

- transportation issues and needs,
- transportation vision for the corridors,
- context sensitive design, and
- Community Working Group participation.



History

- Study undertaken 1992-1998
- Study put on hold due to Rockfort Quarry application
- 2009 – new study commenced for Mississauga Road and Bush Street
- Schedule “C” Environmental Assessment
- 2010/2011 Ontario Municipal Board denied Quarry application
- Study area expanded to include Winston Churchill Boulevard and Old Base Line Road for a comprehensive transportation network review



Observations from the original EA study

Geotechnical Report

Deteriorated pavement

- Longitudinal and edge cracking
- Heaving and fatigued asphalt

Rehabilitation can be done:

- Full depth reconstruction (asphalt and base)
- Full depth asphalt replacement



Drainage and Stormwater Management

- Inadequate ditches and shoulders
- Overgrowth of vegetation
- Undersized culverts

...continued

Natural Environment

Vegetation Community Resources and Botanical Inventory

- 225 Flora species
- 7 butternut (endangered) trees
- 623 Trees (31 species)



Wildlife Resources

- 77 bird species
- 6 frog species
- Presence of Western Chorus Frog
- Jefferson Salamander (endangered)
- Large mammals and amphibian crossings

...continued

Archaeological Assessment

- Existing ROW - no archeological potential
- Stage 2 work required if proposed improvements go beyond existing ROW



Cultural and Built Heritage Report

- 48 Cultural and Built Heritage Resources identified
- Improvements need to avoid impacts

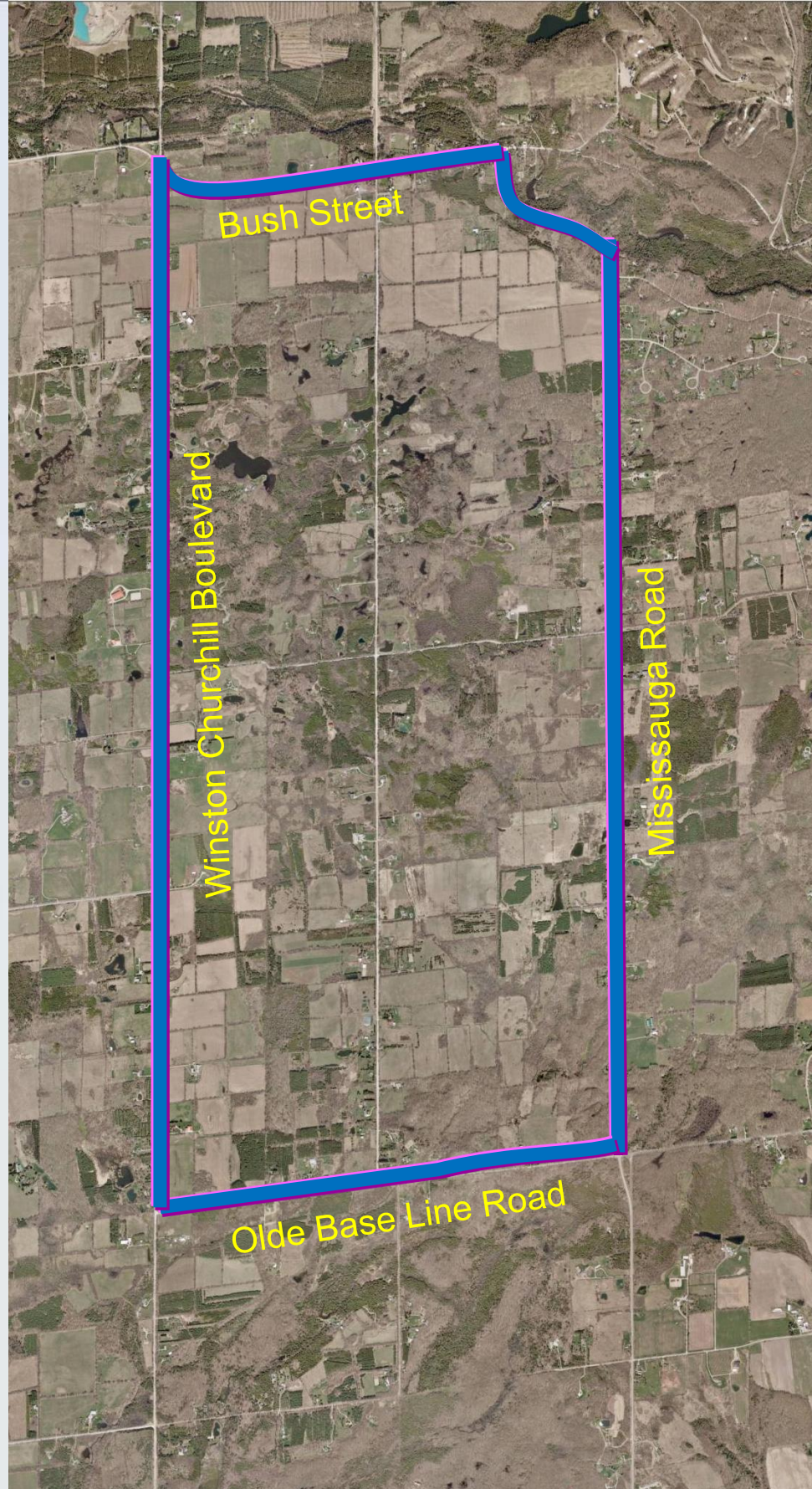
What We Heard

- Public Information Centre Held April 2010
- Focus Group Meeting Held June 2010



- If the roads were improved, it would attract more traffic through the village
- Study area should be expanded to include the broader network

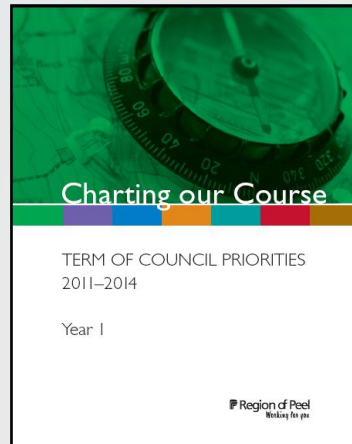
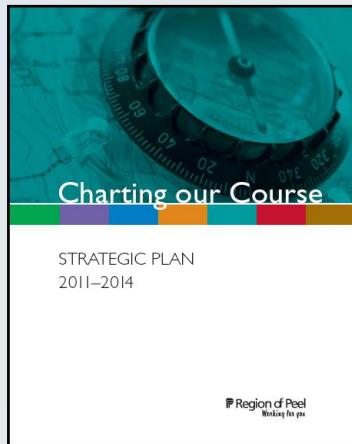
Where We Are Today



- Study area has been expanded to include Winston Churchill Boulevard and Olde Base Line Road
- Region retained HDR to undertake the study as a Schedule C Class Environmental Assessment
- Notice of Study Limits Expansion was mailed out and published in newspapers in July 2012
- Project Bulletin was circulated in July 2012
- Request for Community Working Group Membership Letters of Interest mailed out in July 2012 (additional outreach sent out in September 2012)

Vision

Improvements through Context Sensitive planning and design will enhance experience for all users and reflect the character of the community.



Goals

- Community and Stakeholder engagement
- Opportunities for Active Transportation
- Increase safety for all users
- Improve asset condition
- Improve natural environmental condition



What improvements are being considered?

This study will be considering improvements to address:

- Pavement and road base condition
- Drainage
- Safety (including sight lines)
- Active transportation (pedestrians and bikes)
- Intersection control



This project is not considering:

- Widening (no need for additional travel lanes)

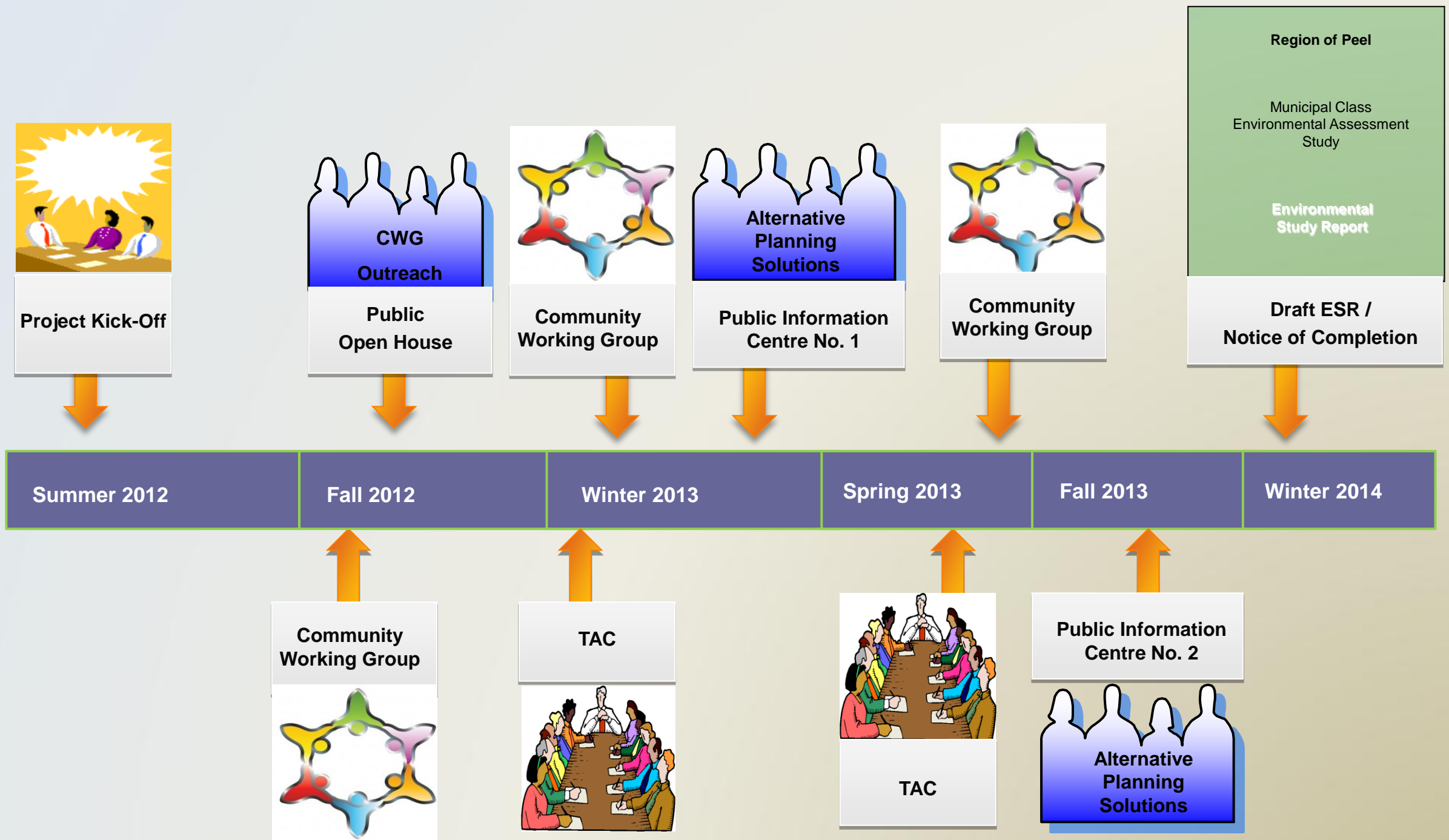
Context Sensitive Design

Context Sensitive Design (CSD) is the art of creating public works projects that meet the needs of the users, the neighboring communities and the environment.



1. Community members will play an important role in identifying problems and solutions that may better meet and balance the needs of all stakeholders.
2. The project will consider the wishes of the community on key design issues (e.g. rural versus urban cross-section, roundabouts versus stop-controlled intersections, paved sidewalk versus gravel shoulder, etc.).

Project Plan and Schedule

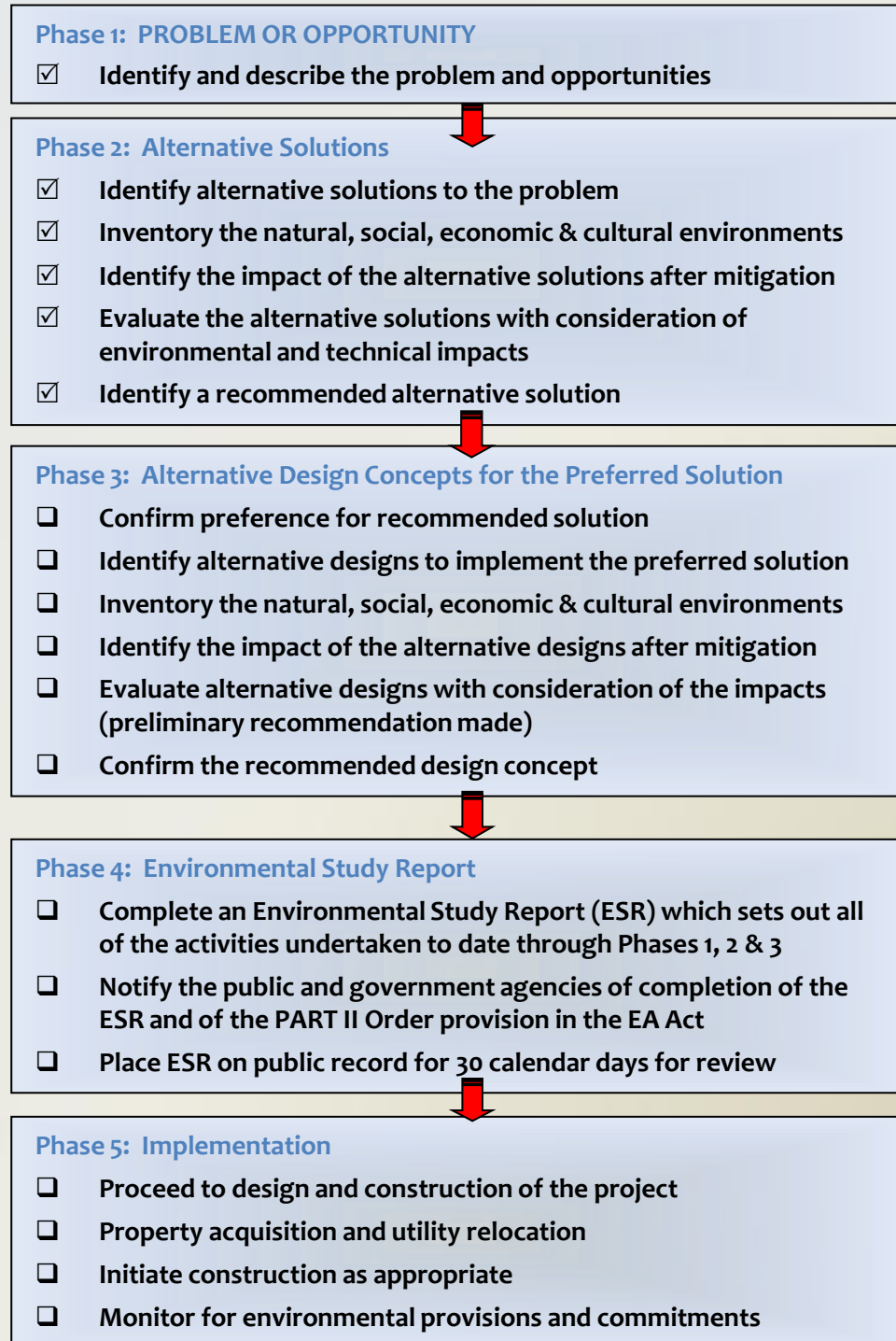


Beyond the Municipal Class EA Process

Additional Points of Public Contact



Phases

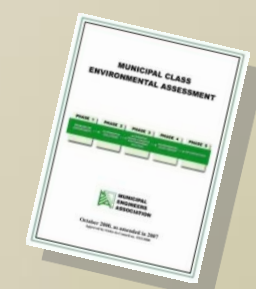
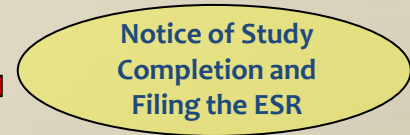


Mandated Points of Public Contact



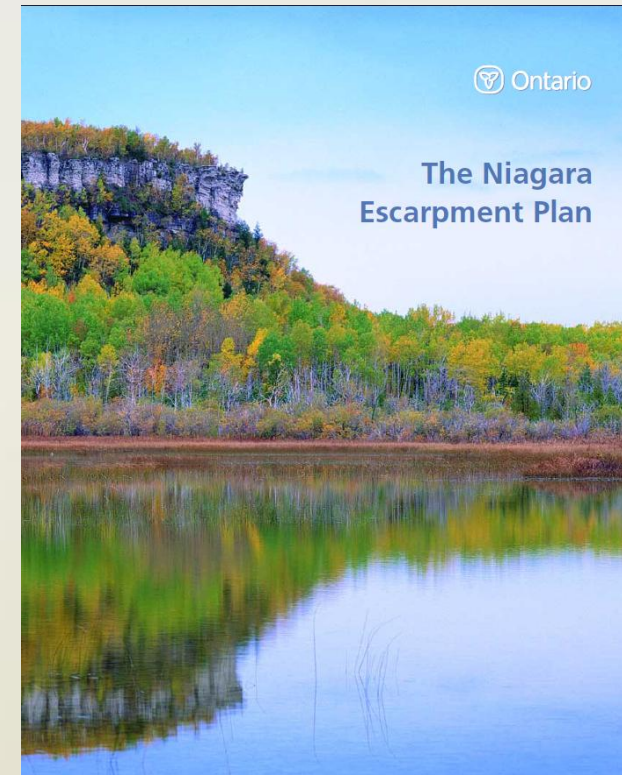
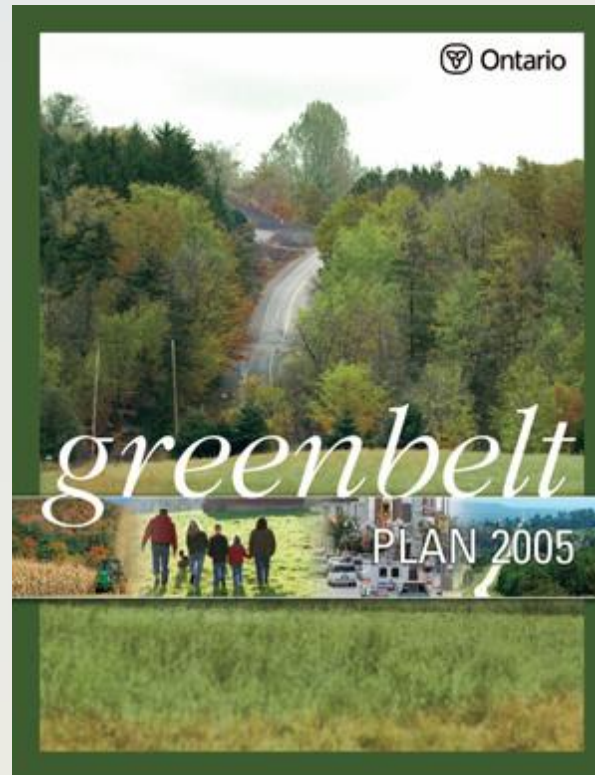
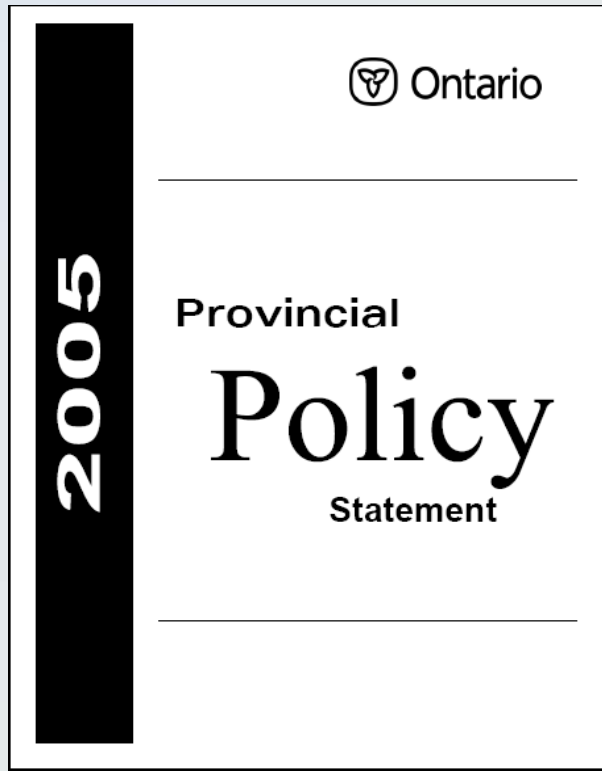
- PIC#1 Winter 2013**
- Needs and Justification
 - Planning Alternative Solutions
 - Evaluation of Planning Alternative Solutions
 - Preliminary Recommended Solution

- PIC#2 (Fall 2013)**
- Alternative designs for the preferred solution
 - Evaluation of alternative design concepts
 - Preliminary recommended design concept



In addition to the mandated points of public contact, the Region has chosen to organize a Community Working Group (CWG) for the study. The CWG members will play an important role in identifying problems and solutions that may better meet and balance the needs of all stakeholders.

Guiding Policies



■ Official Plan



■ Official Plan



■ Official Plan

Transportation Studies and Initiatives

**PEEL LONG RANGE
TRANSPORTATION PLAN**
Update 2012

Region of Peel
Working for you

TOWN OF CALEDON
Region of Peel
Working for you

**Caledon
Transportation
Needs Study
Update**

Study Report

March 2009

PHILIPS
ENGINEERING

Paradigm
Transportation Solutions Limited

ST. MICHAEL'S HOSPITAL
CENTRE FOR RESEARCH ON INNER CITY HEALTH

McMaster
University

Final Report
Peel Healthy Development Index

Prepared for Peel Public Health by
The Centre for Research on Inner City Health at St. Michael's Hospital
With support from the Ministry of Health Promotion
December, 2009

Authors:
James Dunn, PhD
Marisa Creatore, MSc, PhD (candidate)
Evan Peterson, BA
Jonathan Weyman, BSc(Hon)
Richard Glazier, MD, MPH, CCFP, FCFP

With expert consultation by:
Daniel Leeming, MES, MCIP, RPP

Wellington County **ACTIVE
TRANSPORTATION
MASTER PLAN**

Draft Report | June 2012

MMM GROUP ecoplans Paradigm

The Region of Peel's
**Active Transportation
Study**

ACTIVE TRANSPORTATION PLAN

FINAL REPORT
NOVEMBER 2011

IBI
GROUP

**ROAD CHARACTERIZATION STUDY
(RCS)**

Region of Peel
Working for you

Technical Studies to be Undertaken

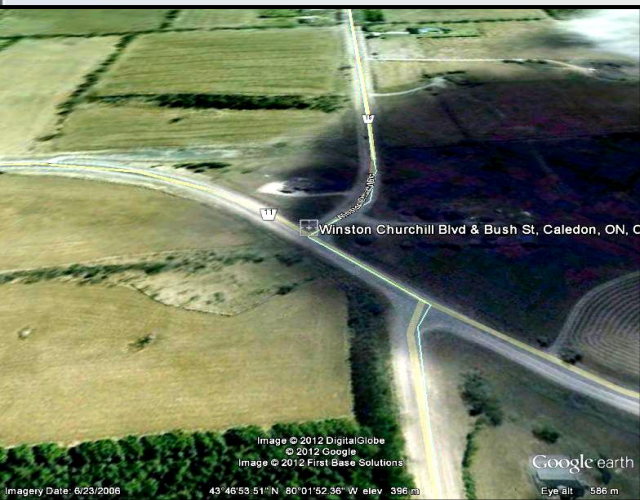
Traffic and Transportation Report

Traffic forecast:

- 2031 Horizon volumes

Operational Analysis

- Seasonal Traffic volumes
- Roundabout analysis



Safety:

- Pedestrians and bikes
- access locations
- sight-lines, geometrics
- collision data analysis

Geotechnical and Pavement Design

- Borehole locations and depth
- Potential use of Recycled aggregate

Utility Impacts

- Future Plans for upgrades
- Utility Relocation



Drainage and Stormwater Management Report

- Structure condition
- Hydrologic and Hydraulic analysis
- Floodplain mapping
- Stormwater Quality treatment

... continued

Natural Environment and Wildlife Habitat

- Inventories
- Species at Risk



Archaeological and Cultural – Built Heritage Assessment

- Stage 1 work for the extended area

Public Consultation

A very important component for the success of the project will be the Community Working Group.

The Community Working Group (CWG) is:

- A forum for focused discussion
- Broad group of interested stakeholders representative of the community
- A non-voting liaison group that makes recommendations to the project team for their consideration.

• If you are interested in participating in the CWG, please submit a letter or an email summarizing:

- who you represent, and
- information about yourself.

• Please submit your one-page letter of interest to either of the following:

Hitesh Topiwala

Peel Region Project Manager

Transportation Division | Public Works

10 Peel Centre Dr, Suite B, 4th Floor

Brampton, ON L6T 4B9

Hitesh.Topiwala@peelregion.ca Ph. (519) 621-7886 ext. 5951

Ph. (905) 791-7800 ext. 7805

Stephen Keen

HDR Project Manager

231 Shearson Cres, Suite 206

Cambridge, ON N1T 1J5

Stephen.Keen@hdrinc.com

• Please note that CWG membership will be limited to 15 representatives.



Next Steps

Transportation and Traffic studies

Technical Studies

Define Problem/ Opportunity

Develop/Evaluate Alternative Solutions

Technical Advisory Committee meeting

Community Working Group meeting

PIC #1

