

NOTICE OF STUDY COMMENCEMENT
CLASS ENVIRONMENTAL ASSESSMENT
MAYFIELD ROAD
FROM
EAST OF AIRPORT ROAD TO WEST OF COLERAINE DRIVE

The Study

The Regional Municipality of Peel is initiating a Class Environmental Assessment (EA) for Mayfield Road, from east of Airport Road to west of Coleraine Drive, bordering the City of Brampton and the Town of Caledon. Mayfield Road is a major east-west arterial road that is experiencing increased traffic growth. As a result, improvements are being considered which may include a combination of road widening, intersection improvements, horizontal and vertical realignments, replacement or expansion of various watercourse structures, pavement rehabilitation, and mitigation of environmental impacts (natural and social).

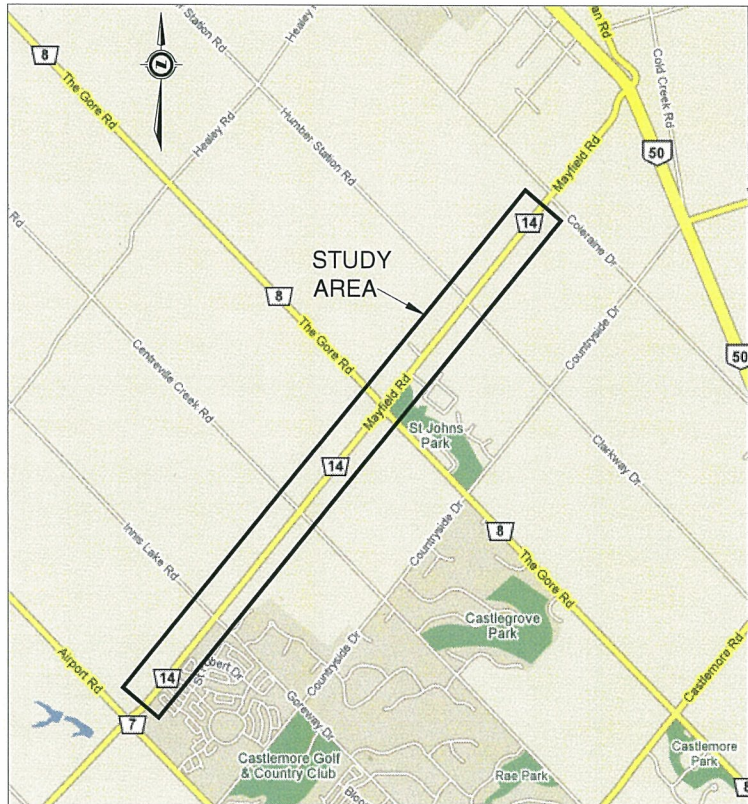
A comprehensive and environmentally sound planning process, that incorporates public and agency consultation and involves a wide variety of stakeholders, is required. The Study Area is shown on the plan provided below.

The Process

This Study is being conducted as a Schedule 'C' project, in accordance with the Municipal Engineers Association, *Municipal Class Environmental Assessment* (2000) guideline. Upon completion of this Study, an Environmental Study Report, documenting the process, will be submitted to the Ministry of the Environment and will be available for public review for a period of 30 calendar days.

Public consultation is vital to this Study. We want to ensure that anyone with an interest in this Study has the opportunity to get involved and provide input, before any decisions are made on a preferred solution or design concept.

As part of this Study, two (2) Public Information Centres (PICs) are planned. The first PIC is tentatively scheduled for late winter or early spring, 2008, and will be at a site in close proximity to the Study limits. The PIC will provide background information on the Study and an informal presentation of various preliminary alternative solutions and concepts, including a comparative analysis where appropriate. Representatives from the Region and the Consultant will be present at the PIC to answer questions and discuss the next steps in the Study. Notification of both PICs will be provided at an appropriate time by means of a similar advertisement in this newspaper.



Comments

We are interested in hearing any comments that you may have about this Study. With the exception of personal information, all comments will become part of the public record for this project.

To provide your comments, or to request additional information concerning this project, please contact either of the following Project Team members:

Ms. Sandy Lovisotto, P. Eng.
Project Manager
Regional Municipality of Peel
11 Indell Lane
Brampton, ON, L6T 3Y3
Tel: 905-791-7800, Ext. 7838
Fax: 905-791-1442
sandy.lovisotto@peelregion.ca

Mr. Garry E. Leveck, P. Eng.
Project Manager
Stantec Consulting Ltd.
49 Frederick Street
Kitchener, ON, N2H 6M7
Tel: 519-585-7316
Fax: 519-579-9210
garry.levack@stantec.com