

ISSUES MAP



01 Multi-Use Pathway
Access requirement to Gore Meadows Community Centre



02 Castlemore Bridge
Widening of Sidewalks Required



03 Castlemore Public School
Grading impact from developments to be considered on widening of The Gore Road



04 Naasksar Sikh Temple
Dedicated right turn lane for temple



05 Castlemore Public School
Signalized intersection with flashing beacons and pick-up / drop-off area to be included in widening /TRCA & MNR approvals



06 Widening Impacts
On culverts buried on West side of The Gore Road



07 Cardinal Ambroziac School
Pedestrian Safety and access to school



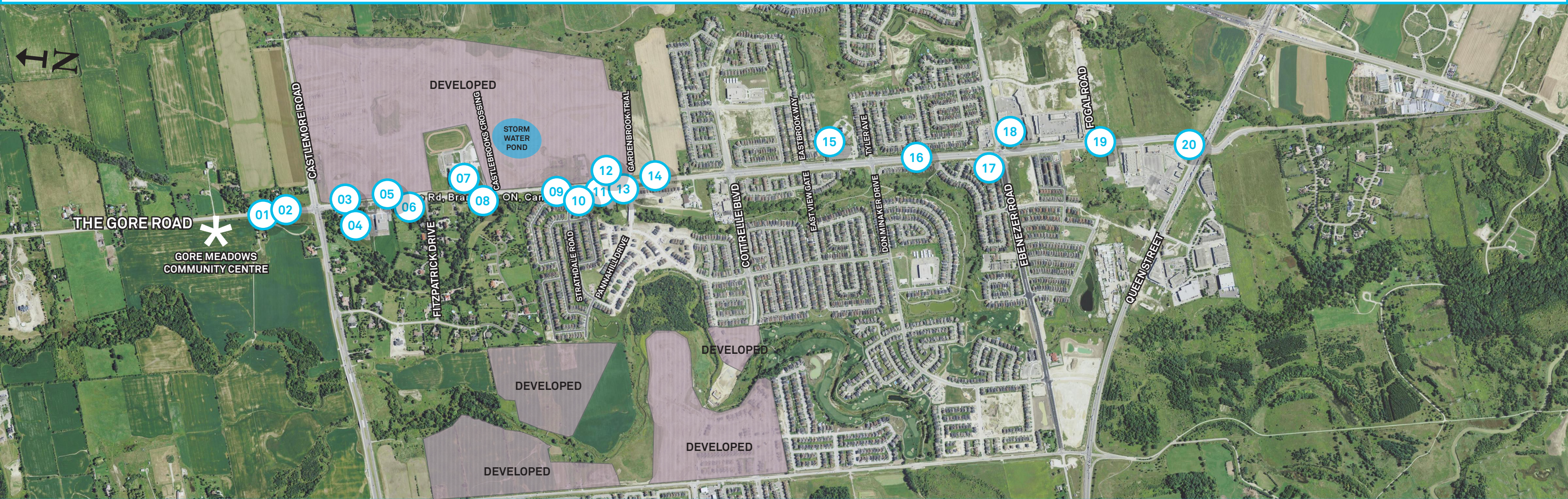
08 St. John's Cemetery
Horizontal alignment constraint - Ground Radar Survey Required



09 North Wylie's Bridge
Replacement Anticipated /TRCA & MNR approvals



Existing Retaining Wall - Developer's retaining wall to be considered in future widening alignment



South Wylie's Bridge
Replacement & proximity of access to driveways /TRCA & MNR approvals

Castlebrooke Secondary School
Pedestrian Safety and access to school

New Developments
along The Gore Rd on North West corner of Pannahill Drive

Excessive Developer grading
impacts on current 4-lane section and future transit facilities

Hindu Sabha Temple
Property constraint which requires stakeholder engagement/buy in based on design review

Speed Zones and Utility Relocations
Relocations Different speed zones ranging from 60km/hr to 70km/hr - Hydro poles and existing utility relocations required.

Ebeneze Community Centre
Horizontal Alignment Constraint- stakeholder engagement and consultation required

Ebenezer Church & Cemetery
Horizontal Alignment Constraint - Ground radar survey required

Shopping Plaza
Direct access to plaza to be considered - ensure stakeholder engagement

Queen Street
Sharp Horizontal Curve approaching Queen St. intersection

